

Fletcher & Company

5 Tomlinsons Cottages Alferton Road, Derby, DE21 4AT

Asking Price £170,000
Freehold



- Double Glazed & Gas Central Heated
- Two Reception Rooms
- Good Sized Fitted Kitchen
- First Floor Passage Landing
- Two Bedrooms & Well-Appointed Bathroom
- Impressive Rear Garden





Summary

A conveniently located, traditional, two bedroom, mid-terrace offering easy access into Derby City centre.

This is a well-presented, traditional, two bedroom, mid-terrace occupying a convenient location on Alfreton Road giving easy access into Derby City centre. The property is double glazed and gas central heated with dining room with feature fireplace, inner lobby, lounge and good sized fitted kitchen. The first floor passage landing leads to two good sized bedrooms and a well-appointed bathroom with a white suite.

To the rear of the property is a low maintenance, very attractive garden offering a high degree of privacy with useful storage building.

F&C

The Location

The property's location on Alfreton Road gives easy access to the Meteor retail park with large retail outlets, Chester Green, Derby City centre, beautiful Darley Park and Darley Abbey Mills with a selection of restaurants and bars, walks along the river Derwent and footpath into Derby City centre. There are easy access to transport links in the area as well as the train and bus station.

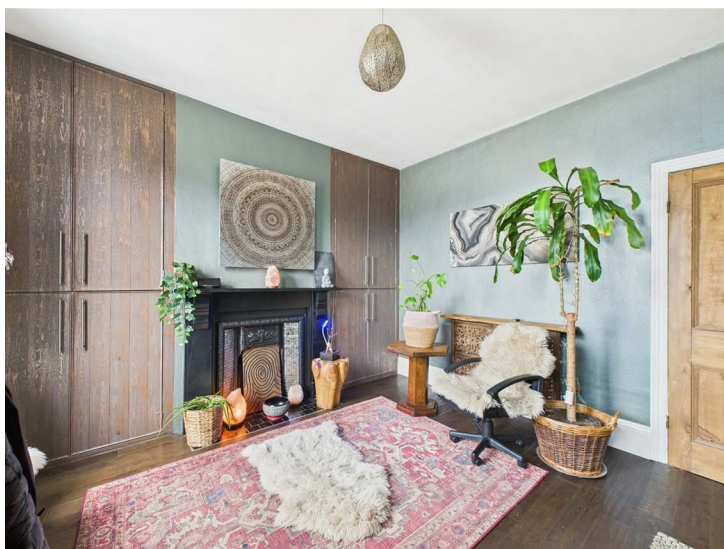
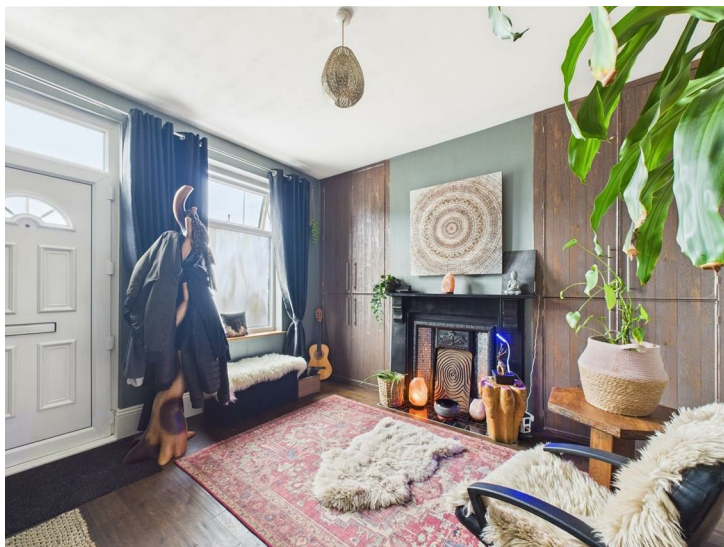
Accommodation

Ground Floor

Dining Room

12'3" x 10'11" (3.74 x 3.33)

A UPVC double glazed entrance door provides access to dining room with feature fireplace with decorative surround and cast iron hearth, useful storage to chimney breast recesses, central heating radiator, wood flooring, double glazed window to front and stripped panelled door to inner lobby.



Inner Lobby

Having a useful understairs storage cupboard and access to lounge.

Lounge

13'1" x 11'11" (3.99 x 3.64)

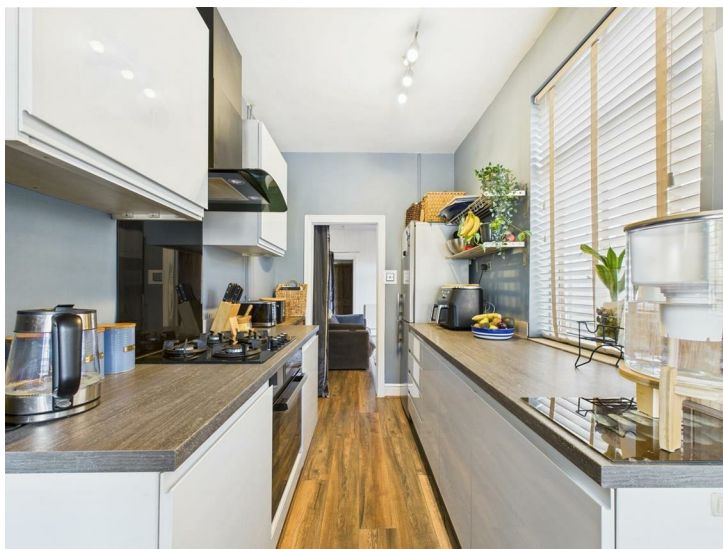
Featuring chimney breast with timber lintel, tiled hearth and interior and cast iron stove, central heating radiator, wood effect flooring, double glazed French doors to garden, door to kitchen and stripped panelled door giving access to staircase to first floor.



Fitted Kitchen

13'9" x 6'6" (4.20 x 2.00)

Having granite effect worktops with tiled upstands, inset one and a quarter stainless steel sink unit with mixer tap, gloss finish base cupboards and drawers, complementary wall mounted cupboards, four plate gas hob with built-in oven beneath and extractor hood over, appliance spaces suitable for washing machine and slimline dishwasher, fridge freezer, wood effect flooring, wall mounted Worcester gas fired boiler and double glazed windows to side and rear.



First Floor Landing

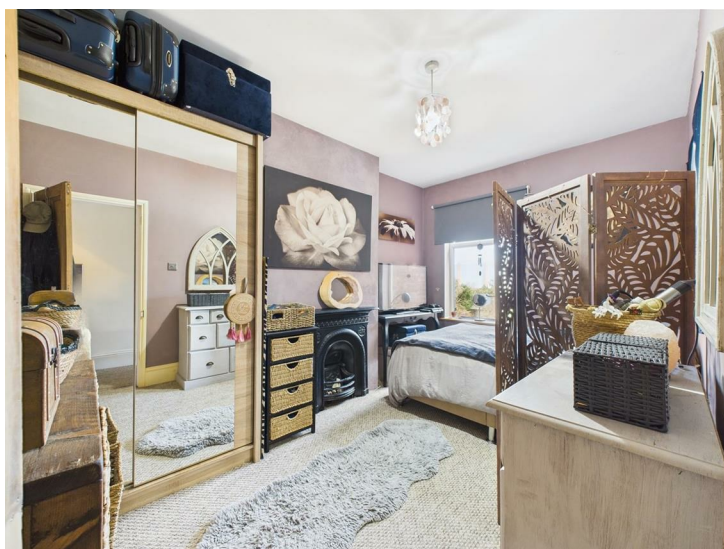
13'2" x 2'11" (4.02 x 0.89)

A passage landing with doors to bedrooms.

Bedroom One

12'0" x 11'10" (3.67 x 3.61)

Having a central heating radiator, a cast iron fire surround, over stairs storage cupboard and double glazed window to front.



Bedroom Two

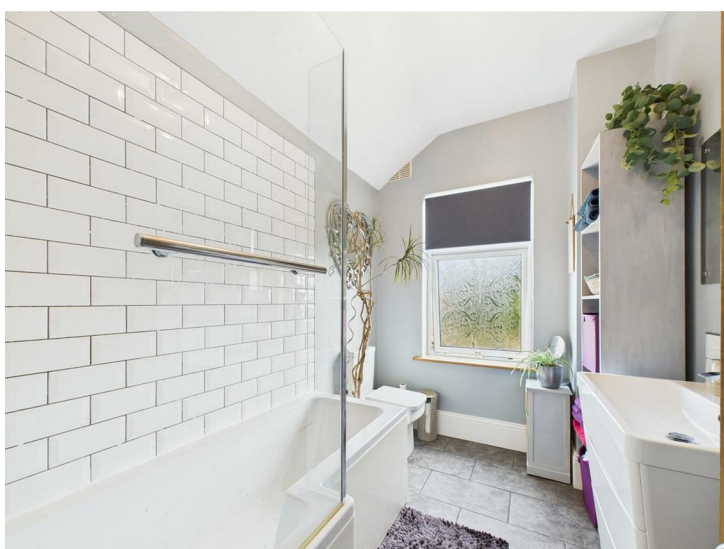
13'3" x 8'7" (4.06 x 2.62)

With a feature cast iron fire surround, central heating radiator and double glazed window to rear.

Bathroom

8'10" x 6'6" (2.71 x 2.00)

With a white suite comprising low flush WC, vanity unit with wash handbasin and drawers beneath, panelled bath with shower over, chrome towel radiator and double glazed window to rear.

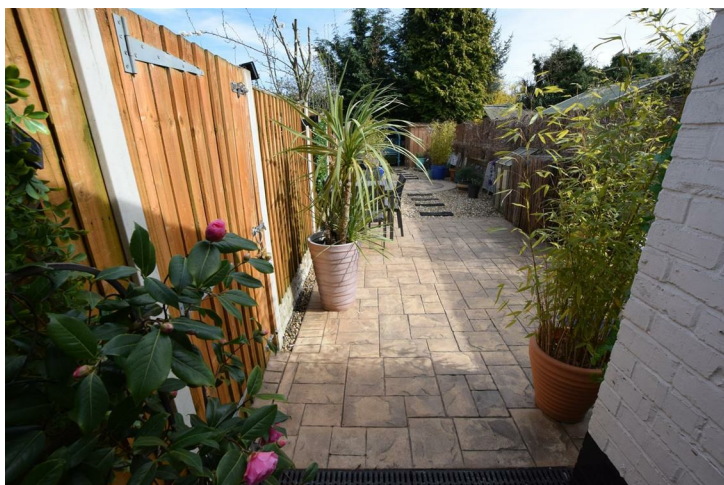


Outside

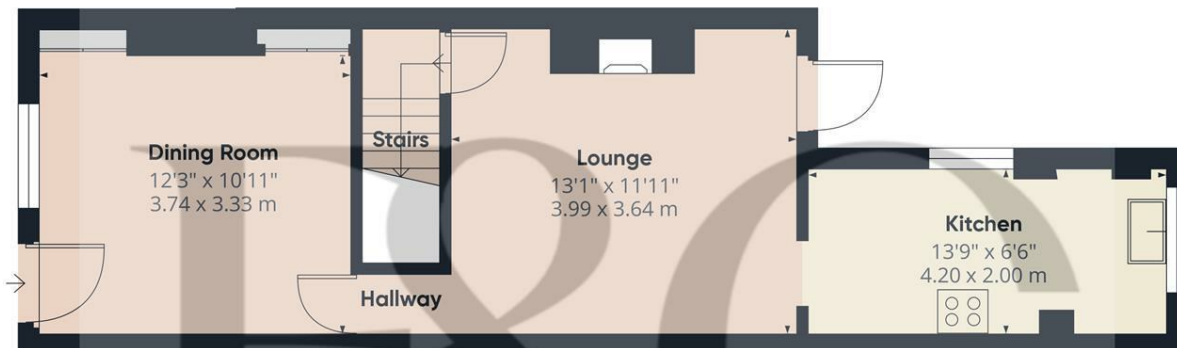
To the rear of the property is a beautiful, relaxing, calming garden featuring a patio and large gravelled expanse with feature circular patio, having plenty of room for potted plants and outdoor dining. The garden is bounded by brick walling, read fencing and timber fencing. To the foot of the garden is a useful brick out building/store room.



Council Tax Band A







Floor 0

Approximate total area⁽¹⁾

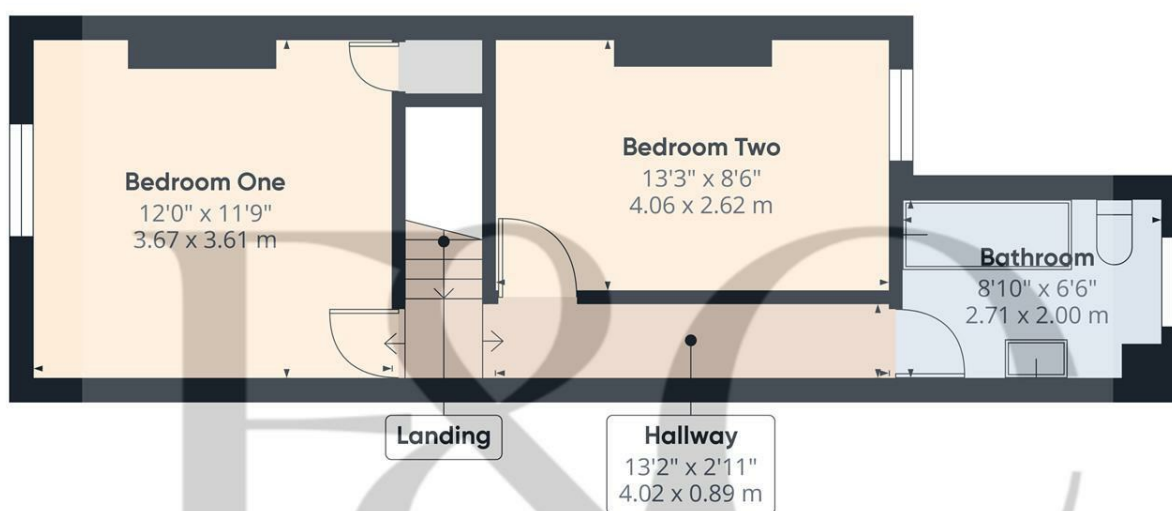
418.27 ft²
38.86 m²

(1) Excluding balconies and terraces.

While every attempt has been made to ensure accuracy, all measurements are approximate, not to scale. This floor plan is for illustrative purposes only.

Calculations were based on RICS IPMS 3C standard. Please note that calculations were adjusted by a third party and therefore may not comply with RICS IPMS 3C.

GIRAFFE360



Floor 1

Approximate total area⁽¹⁾

362.64 ft²
33.69 m²

(1) Excluding balconies and terraces.

While every attempt has been made to ensure accuracy, all measurements are approximate, not to scale. This floor plan is for illustrative purposes only.

Calculations were based on RICS IPMS 3C standard. Please note that calculations were adjusted by a third party and therefore may not comply with RICS IPMS 3C.

GIRAFFE360



Energy Efficiency Rating

	Current	Potential
Very energy efficient - lower running costs		
(92 plus) A		
(81-91) B		
(69-80) C		78
(55-68) D	55	
(39-54) E		
(21-38) F		
(1-20) G		
Not energy efficient - higher running costs		
England & Wales	EU Directive 2002/91/EC	

Duffield Office

Duffield House
Town Street
Duffield
Derbyshire
DE56 4GD

01332 843390

duffield@fletcherandcompany.co.uk

Derby Office

15 Melbourne Court
Millennium Way
Pride Park
Derby
DE24 8LZ

01332 300558

derby@fletcherandcompany.co.uk

Willington Office

3 The Boardwalk
Mercia Marina
Findern Lane
Willington
Derbyshire
DE65 6DW

01283 241500

willington@fletcherandcompany.co.uk

5 Tomlinsons Cottages Alfretton Road
Derby
DE21 4AT

Council Tax Band: A

Tenure: Freehold

